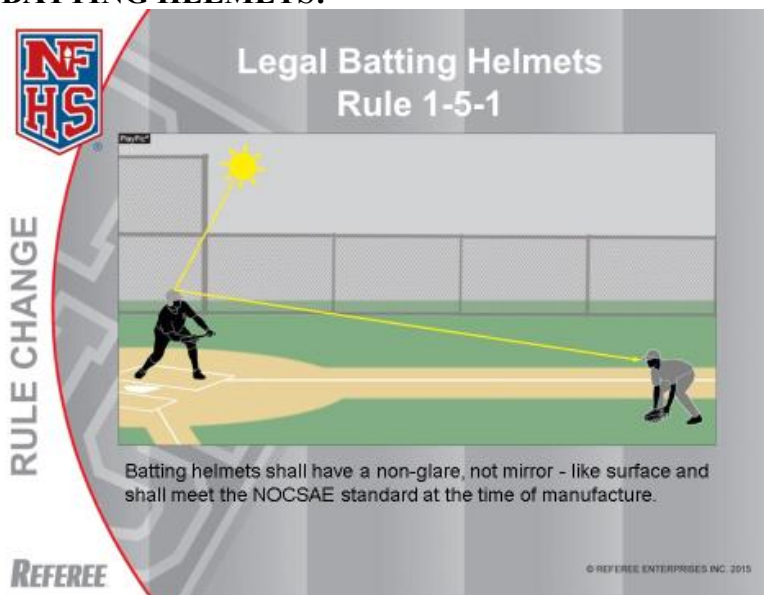


Memorandum # 1

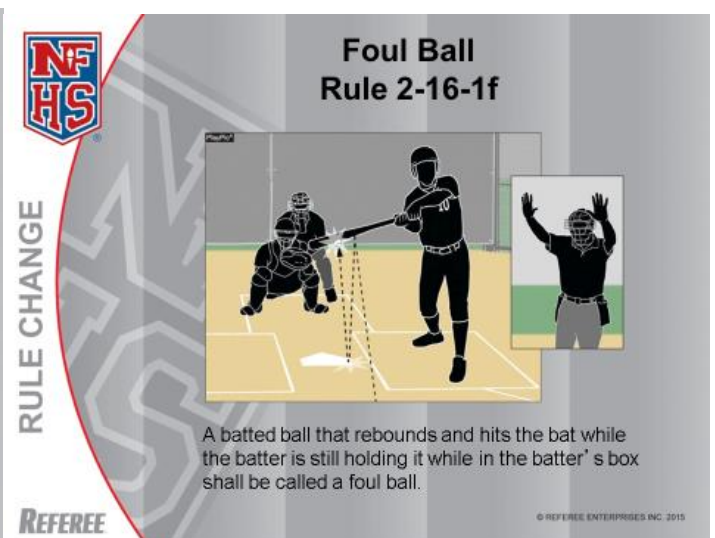
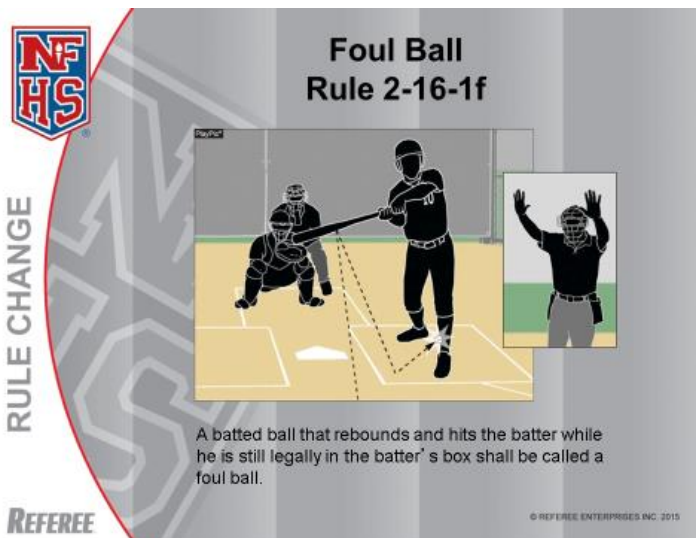
Date: February 4, 2015
To: CBUA Instructional Chairmen
Copy: CBUA Executive Board, Ken Allan
From: Bradley Hungerford, CBUA Executive Instructional Chairman
Re: Memo # 1 -2015 Season

Welcome everyone to the 2015 NFHS, CIF-SS and CBUA baseball season. Hard to believe that it is already here. I know that on field clinics, scrimmages etc. In addition to the new NFHS rules, last week the CIF has passed some additional rules that shall be enforced beginning this season.

- **NEW 2015 NFHS RULES:** I am sure by now that you are all well aware of the new rules changes for the 2015 season. At our CBUA executive meeting Ken Allan, State Rules Interpreter presented a power point presentation with these new rules. I have acquired this power point and wanted am using some of these photos for our assistance.
 - **LEAGAL BATTING HELMETS:**



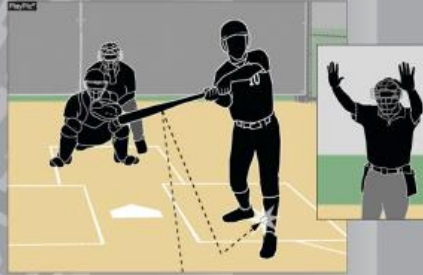
- **FOUL BALL:**





Foul Ball Rule 2-16-1f

RULE CHANGE



Even though this batter has one foot completely outside the batter's box, he has one foot still in. Therefore, when the batted ball rebounds and hits him, it shall be called a foul ball.

REFEREE

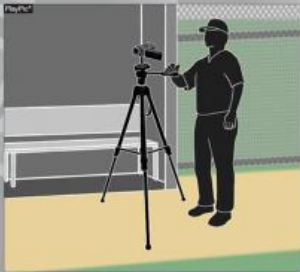
© REFEREE ENTERPRISES INC. 2015

o VIDEO PERMITTED:



Video Permitted Rule 3-3-1

RULE CHANGE



The rule that prohibited using video for coaching purposes during a game has been removed. Therefore, it is legal for a coach or player to use a camera, tablet or phone to record video during a game from the dugout.

REFEREE

© REFEREE ENTERPRISES INC. 2015



Video Equipment in Coaching Box Rule 3-3-1h

RULE CHANGE



Although it is now legal to use video for coaching purposes during a game, a coach is not permitted to record while in the coaching box. A coach may only have a stopwatch, rule book (hard copy) and scorebook while coaching in the box.

REFEREE

© REFEREE ENTERPRISES INC. 2015



Video Equipment Rule 3-3-1

RULE CHANGE



Not only may teams record video during the game, but they may also watch it for coaching purposes.

REFEREE

© REFEREE ENTERPRISES INC. 2015



Video Equipment Rule 3-3-1, 10-1-5

RULE CHANGE



A coach is not permitted to show a play to umpires, as umpires are not allowed to use video equipment during a game. If a coach persists, he can be warned, restricted to the dugout or ejected.

REFEREE

© REFEREE ENTERPRISES INC. 2015

○ FOLLOW THROUGH VS BACKSWING INTERFERENCE:

Follow-through Interference
Rule 2-21-4

RULE CHANGE

On his natural follow-through, the batter has made contact with the catcher. The ball is delayed-dead on follow-through interference and if F2 isn't able to throw out the runner attempting to steal, the runner must be returned to first base and the batter is out.

REFeree

© REFEREE ENTERPRISES INC. 2015

Backswing Interference
Rule 2-21-5

RULE CHANGE

Before the time of the pitch, if the batter's practice swing makes contact with the catcher or his equipment, the umpire shall call an immediate dead ball. There is no penalty.

REFeree

© REFEREE ENTERPRISES INC. 2015

- POINT OF EMPHASIS:
 - HELMET CARE:

Helmet Care

POINT OF EMPHASIS

Coaches need to ensure helmets (and all equipment) are in suitable condition for use, particularly when reviewing equipment prior to the start of a season. While this helmet met NOCSAE standards at the time of manufacture, it is no longer suitable for use.

REFeree

© REFEREE ENTERPRISES INC. 2015

Helmet Care

POINT OF EMPHASIS

Tape is not permitted on a batting helmet, since it could be covering up a crack or defect. Also, it could compromise the ability of the helmet to protect a player.

REFeree


© REFEREE ENTERPRISES INC. 2015

ENFORCEMENT: As per state rules interpreter Ken Allan, The umpire shall require the player to remove the improper helmet and replace it with a proper helmet. This **IS NOT** a team warning situation followed by an ejection on any subsequent offense. Simply have the helmet removed from the game and replaced with a proper helmet.

○ **COACH DELAYING THE GAME:**

NFHS

**Pitching Substitution:
Coach Delaying the Game**



A replacement pitcher gets eight warm-up throws. The defensive team shall be ready to resume play upon completion of the eighth throw. A coach is permitted to observe the throws, but must be off the field when they are completed.

POINT OF EMPHASIS

REFEREE

© REFEREE ENTERPRISES INC. 2015

○ **CELEBRATIONS:**

NFHS

Celebrations



During a home-run celebration, team members must remain clear of the plate, allowing the umpire to ensure all runners legally touch.

POINT OF EMPHASIS

REFEREE

© REFEREE ENTERPRISES INC. 2015

NFHS

Celebrations



A team is permitted to be outside the dugout and celebrate during a dead-ball, such as after a home run. However, Rule 3-3-1f (4) does not permit unsporting behavior and can result in the ejection of players who taunt.

POINT OF EMPHASIS


REFEREE

© REFEREE ENTERPRISES INC. 2015

○ **POST GAME CONDUCT AND UMPIRE JURISDICTION:**

NFHS

Postgame Conduct



Umpires retain jurisdiction and can eject players or coaches until all umpires have left the field. Even though the game is over, this coach is subject to being ejected.


POINT OF EMPHASIS

REFEREE

© REFEREE ENTERPRISES INC. 2015

NFHS

Postgame Conduct



Since the umpires have left the field, umpires cannot issue a post-game ejection. However, if confronted by a coach, player or fan, umpires are expected to report the conduct to their state association office.

POINT OF EMPHASIS

REFEREE

© REFEREE ENTERPRISES INC. 2015

- **CIF BYLAW 1502**

- **ALL BASE COACHES TO WEAR PROTECTIVE HELMETS.** On January 30, the CIF Federated Council voted to require all base coaches to wear a protective helmet. This rule goes into effect immediately and applies to all levels of high school baseball.

This is the wording of 1502: *It is required that adult base coaches wear a protective helmet. Play will not continue until compliance with this rule is met. It is recommended that the helmet meet NOCSAE standards.*

As per NFHS rules, players occupying coaches boxes must wear a NOCSAE approved helmet. (Double ear flaps) Adult coaches are not required to wear a NOCSAE approved helmet, but they must wear a protective helmet. This rule applies to any team playing in the state of California.

The plate umpire shall not put the ball in play to begin a new half inning until he is sure all base coaches are properly equipped. An adult coach who does not wish to be in compliance must remain in the dugout.



Thank you all for your hard work and dedication. If you have any questions please feel free to contact me.

Bradley L. Hungerford
CBUA Executive Instructional Chairman
CBUAIC@Gmail.com
(760) 272-0671